

Historic, Archive Document

Do not assume content reflects current scientific knowledge, policies, or practices.

DAHLIAS

Catalogue and Price List *of dahlias*

1931

LIBRARY
RECEIVED

Department of Agriculture

PLANTS



TUBERS

For Better Gardens

BURNETT BROS., INC.

SEEDSMEN--BULB GROWERS

92 Chambers Street

NEW YORK

From the Cheapest That's
Good to the Best
that Grows

[Describing the Best-By-Test from East
and West of the latest Novelties and
Standard Varieties of all the Different
Types and Colors of These Flowers.]

*When Better Varieties Can Be Grown
We Will Grow Them*

Catalogue and Price List
For 1931

We solicit your business on the basis of Price,
Quality and Fair Dealing.

We realize quality is our best means of advertising. We are better equipped than ever to supply quality and quantity.

BURNETT BROS., INC.

SEEDSMEN—BULB GROWERS

92 Chambers Street

New York, N. Y.

Foreword

In presenting our annual catalogue we wish to take this occasion to thank all those who have favored us with their patronage and to assure them that we highly value it and hope for its continuance. We try to give entire satisfaction to every customer and stand back of every tuber or plant that we send you, because we realize that no business can be successful unless its patrons are satisfied customers. We aim to grow only the best introductions discarding all others that do not prove up to our standard.

It has been a pleasure to read the many letters we have received, telling of the success of our customers with our Dahlias, in the various shows where they have exhibited.

MISTAKES—Like all human beings, we are apt to make mistakes, and if an error occurs, we will consider it a favor to be notified at once so that we can rectify the oversight.

If you have a complaint, tell us first. In the rush of Spring business, mistakes happen.

ORDER EARLY—To give entire satisfaction, let us suggest early ordering. The stock of choice varieties is often limited, and cheaper varieties are in great demand.

No changes or substitutions are made in any orders unless requested to do so. Name second choice if you wish us to substitute.

If you do not find the variety you want in this list let us quote you. We may have it.

NEW VARIETIES are being tested annually and only the very best are added to the list.

GUARANTEE—While every care is exercised at digging, planting and packing that none should be mixed, no guarantee is given, other than to replace any stock that may prove not true to name.

ALL ORDERS from unknown parties must be accompanied by remittance or reserve orders must be covered by 25 per cent. of the amount of the order.

ALL RETAIL ORDERS in this list are for bulbs, seeds or plants prepaid to your address.

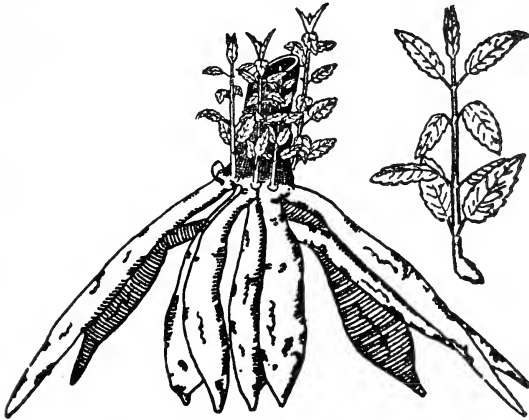
FORWARDING—We ship tubers at the planting time unless otherwise requested.

A DAHLIA CHAT

This catalogue describes most of the best Dahlias in cultivation today.

Dahlias with weak stems and hanging heads have no place in our gardens or catalogue. We are confident that this list presents the best Dahlias, Tubers, Seed and Plants on the market. In this belief, we submit them to the most discriminating Dahlia experts.

HOW WE PROPAGATE OUR PLANTS



A Clump with Cuttings; Also Cutting Ready For Propagating Beds, showing Heel.

GREEN PLANTS

Properly Grown Dahlia Plants Produce More and Better Blooms Than Tubers.

GREEN PLANTS are rooted cuttings taken from tubers which were started in the greenhouses in January. They are cut off with a heel and rooted just as you would slip a Geranium; as soon as rooted they are potted, and allowed to grow in the greenhouse until they are removed to the cold frames to harden off. **Dahlia Plants are Cheaper than Tubers** because they can be produced quicker and at less expense. Most all the large show blooms are grown from plants; the large cut flower growers use plants in preference to tubers.

We strongly recommend green plants, grown and shipped in Fertex pots, such as we furnish. They are stocky plants and will give as good satisfaction as tubers. Green Plants are much less liable to become diseased, and they will produce as good or better flowers, as well as tubers, and are generally cleaner and more free from disease. All plants are hardened off and will be ready for shipment after April 15th. We have received very fine reports on plants we sent out last season in Fertex pots.

We supply properly grown plants of any dahlia listed in this catalogue at one-half the price of tubers where the tuber price is \$3.00 or more. Plants of any variety listed at less than \$3.00 each only grown to order. We guarantee our plants to reach you in first class condition, any part of the country, if shipped via express.

We made several experiments shipping plants both by Parcel Post and Express and found Express shipments reached their destination quicker and in better shape than Parcel Post. We will enclose an extra plant to cover express charges on all retail orders.

TWENTY ACRES OF UPTODATE DAHLIAS

Come and see them grown under field conditions. We do not water or use nitrates to force large blooms; grown naturally as you would any other field crop. It is to your advantage to see the new varieties growing before you purchase. Dahlia lovers and growers, who are interested in the latest introductions, are cordially invited to visit our Dahlia fields from August 15th to frost. We will have one of the largest collections in the East; from giant Decoratives to the Baby Rosettes, Charm and Pom Poms. Many of our new seedlings and new originations of leading growers from all sections of the country. You will have an opportunity to select the best. If you are coming from a distance, write us a few days in advance.

LOCATION—Our fields for 1931 will be located two miles East of Huntington, on the South Side of Jericho Turnpike (Sunrise Highway, Route 25A) on the Brush Farm, opposite Park Avenue. Sign board on Field bears our name.

If you are unable to visit our trial show gardens and fields, stop at our booth at the New York Show of the A. D. S. We will be glad to see you at either place.

POTASH FED DAHLIAS

Potash Fed Dahlias is a catchy phrase, but if potash is used exclusively, the result would be disastrous. As with human beings, the plant food must be well balanced. We use a complete fertilizer known as 4-8-4.

4% Nitrogen, 8% Phosphoric Acid, 4% Potash.

Nitrogen stimulates the growth of the plant above the ground and adds to the size of the flowers.

Phosphoric Acid increases the fibrous feeding roots which strengthens the plant growth, gives substance to the flowers and helps to mature the tubers.

Potash gives color to the flowers, vigor and tone to the plants and is essential in the formation of starch in the tubers. Otherwise they would not keep well in the winter.

The fertilizer should be well mixed with the soil, should not come in contact with the plant or tuber, because it is liable to burn them. When used as a top dressing it should be well raked in the soil.

A NOTE OF ENCOURAGEMENT

There is no secret about the growing of wonderful Dahlias. It does not require or call for expert knowledge. You can grow them in the smallest garden. All that is necessary for you to do is to grow the varieties that are the acknowledged leaders, securing them from reliable growers. Start this Spring by discarding your inferior stock. Secure a few of the best varieties and you will never regret it. By purchasing a few extra good ones each year you will in a short time, have a good collection.

Good Dahlias are not all high priced. If you are not familiar with the best leave selection to us. Tell us what varieties you have, the amount you wish to spend and if for exhibition or garden.

Plants in Fertex Pots

Try our Plants; they are of the quality to give satisfactory results. The illustration shows an ideal grown Plant ready to plant in the garden.



DAHLIA PLANTS FOR 1931

Our Dahlia Plants are not just ordinary rooted cuttings but extra strong plants made with a heel, well-rooted and hardened off ready to keep right on growing and give perfect satisfaction. They will be grown and shipped in Fertex pots, which do not bind the roots. The roots grow through the walls of the pot free, unhampered and vigorous which advances the flowering period. The plants feed on the pots which are made of material used by the large fertilizer companies. There is no check to growing or crooked tubers when transplanted as pot and plant are planted in the garden without disturbing the roots.

Growing Dahlias from Seed

Dahlias are easily grown from seed, will bloom as early, and produce clumps as if grown from tubers.

HOW TO SELECT SEED—Heredity is most important. Like begets like and for that reason only seed from the largest and best varieties should be selected. Do not buy seed unless you know the varieties it is from, if you wish satisfactory results. The seed-bearing parent influences the type, size of flower stem, and general habits.

HAND CROSSED SEED—The Dahlia is a composite flower and to properly hand-cross Dahlia seed is slow tedious work as it means a separate cross for each seed. This makes the cost prohibitive. Our growers depend on the bees and nature to do the crossing. Judging from past performances they have done a good job. As the only influence the pollen has on the seedlings is the color why bother with hand-crossing? Each year we test out seed from other growers in order to be able to select the best seed we can get for our trade.

LOS ANGELES COUNTY GROWN SEED—There is no better seed grown than is grown for us in Los Angeles County, California. This is due to the long rainless growing season which permits seed from the large double varieties to ripen. This is not possible in any other section of the country where they have rains or frost before January.

HAND-PICKED AND SELECTED—All our seed is picked by hand from seed pods that have ripened on the plant from selected flowers of the best varieties in existence, all tried reproducers of the highest type seedlings. The seed is harvested from show gardens where only the varieties listed are grown. To get seed from all the varieties listed we had to contract with several growers.

OUR GUARANTEE—We claim that you cannot purchase better seed than our two special grades. The large number of testimonials we receive from satisfied customers, repeat orders with recommendations to their friends bear us out in this statement, you can buy cheaper seed. Should you not be satisfied with the seedlings you get from our seed as compared with seed from any other grower we will refund the price you paid us for seed. Do not judge the quality of our seedlings by seeing them listed in our catalogue. Look them up in the catalogue of other growers and trial ground reports, the Dahlia Roll of Honor, also reports of shows. Then do likewise with advertisers of hand-crossed seed and notice the number of their originations as compared with ours. This is the safe way.

PRIZES OFFERED—We will offer a silver cup for the best Seedling shown at the A. D. S. Show held in New York City.

HOW TO ORDER SEED—Seed can be had from any variety listed with the name of seed bearing parent on package, or a mixture of any combination you desire. No order filled for less than 50 seeds. You may order them all from one variety or select 10 seeds of five varieties. All will be sent in separate packages. Order early as the demand for some varieties is greater than the supply.



CHEMAR'S GOLD MEDAL XXX SEED

California Grown

All pedigreed hand picked from selected flowers. Pods ripened on plants. You may buy cheaper seed, we doubt if you get better. We can supply seed from the varieties listed below with name of seed bearing parent on package or in mixture.

Robert E. Lee (S. C.)	Kemps Violet Wonder (H. C.)
Penn Charter (D.)	Jane Cowl (D.)
Mrs. Alfred B. Seal (D.)	Gov. Morgan F. Larsen (D.)
Mildred Brooks Hoover	Supreme Glory (D.)
New Glory (H. C.)	The World (D.)
Donna California (D.)	Thos. A. Edison (D.)
Eagle Rock Beauty (H. D.)	Ty Cobb (H. D.)
Eagle Rock Wonder (H. C.)	My Maryland (H. C.)
Eliza London Shepard (D.)	Seals Californian (D.)
Aztec Glory (H. D.)	Waldheim Sunshine (D.)
Fort Monmouth (H. C.)	Monmouth Champion (D.)
Golden Trumpet (H. C.)	American Triumph (C.)
King Midas (D.)	Treasure Island (D.)

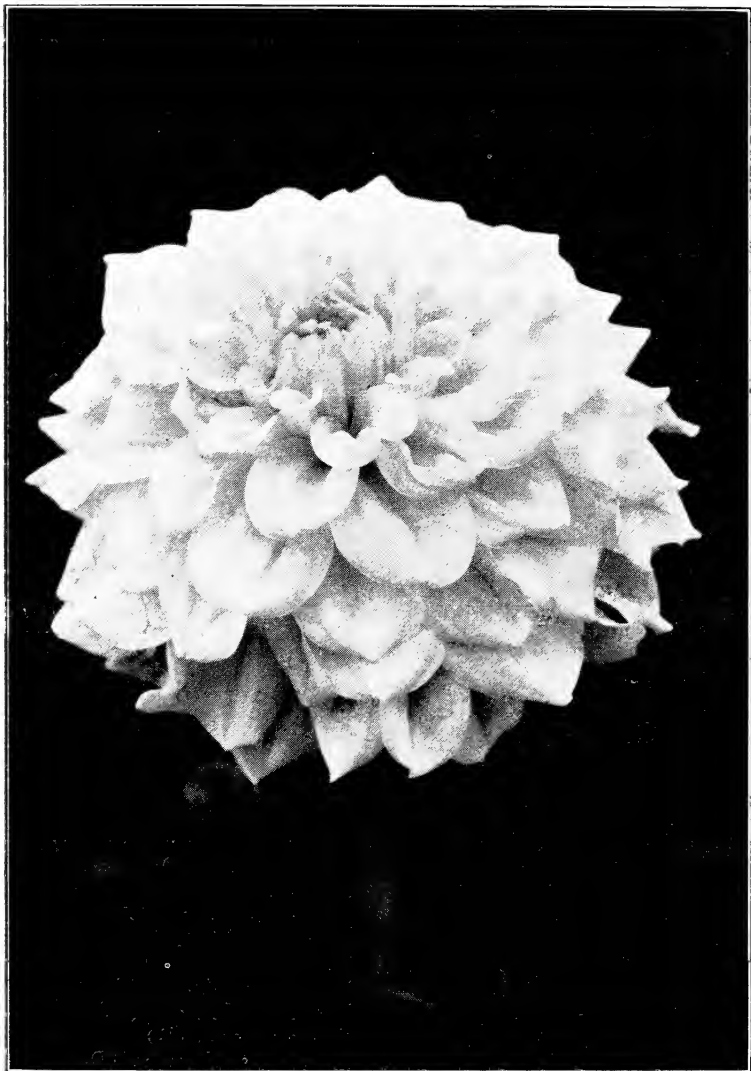
50 seeds (10 seeds of 5 varieties) \$5.00, 100 seeds (10 seeds of 10 varieties) \$8.00, mixture 50 seeds, \$5.00, 100 seeds \$8.00

CHEMAR'S XX SOUTH CALIFORNIA

GROWER'S SEED

Queen of the Garden	El Rey (D)
Beautiful (D.)	Edith Carter (C)
Princess Louraine (D.)	Electric (C.)
Marion Broomall (H. C.)	Eagle Rock Gem (C)
Eagle Rock Sunshine (C.)	Cigarette (H.C.)
Barbara Redfern (D.)	I. W. Fellows (C.)
Flaming Meteor (D.)	George Schofield (C.)
Jersey's Beacon (D.)	Watchung Sunrise (D.)
Jersey's Beauty (D.)	Tommy Burch (D)
Tommy Atkins (D.)	Rose of the Rancho (D.)
Runa (D)	Pink Supreme (C.)
Nature's Jewel (H.C.)	Marion (D.)
Nova (D)	Meesterstuck (D.)
	Eleanor Vandervere (D.)

50 seeds (10 seeds of 5 varieties) \$3.00, 100 seeds (10 seeds, 10 varieties) \$5.00, 300 seeds (30 seeds, 10 varieties) \$10.00 mixture 50 seeds, \$3.00, 100 seeds \$5.00.



CHEMAR'S SNOWWHITE—A decided outstanding pure white formal decorative. The plant is a strong robust grower producing large deep flowers on 3 foot cane-stiff stems. The flowers are held facing and are produced in abundance from early in the season until frost. It is four years old and has never shown an open center nor any trace of color. We recommend it for exhibition and cut flowers as it is a good keeper. We guarantee this flower or refund money. **Plants only \$7.50**

OUR NEW PEDIGREED ORIGINATIONS



GUARANTEED TO GIVE SATISFACTION

Three times certified by both the United States Department of Agriculture and the State of New York as being free from injurious insects and disease.

At the Trial Grounds as to their merit.

OUR NEW VARIETIES FOR 1931

We are introducing, this year, three new dahlias, and in selecting them, we have paid especial attention to have them meet all of the requirements new dahlias should have. They are all distinct either in shape or coloring, all are of good size and have the best of stems.

It will be noted that we are not asking an exorbitant price for any of these novelties; this is in line with our policy not to disseminate our new varieties until we have large enough stocks of them so that we may price them within the reach of all.

CHEMAR'S AUTUMN—A large apricot buff staghorn Cactus, a color that shows up well under artificial light. The large blooms are held erect on long stiff stems. Recommended as a good Dahlia for all purposes. **Tubers \$10.00 Plants \$5.00**

CHEROKEE PRINCE—(Dec.)—Deep ox-blood red or maroon in such a rich velvety shade that the flower almost appears to have an artificial texture. This is not "just another" dahlia, but is a real distinctive flower and has been an attraction in our gardens since the first blossom opened up. The flowers are of a regular decorative type with rather flat, broad petals and perfect centers; are produced freely and are among the last to stop blooming, the late blooms being just as perfect as the first. The bushes grow tall and the habit is such that stems may be had three or four feet long with just ordinary disbudding; these are slender and stiff with the flowers carried straight across and not the slightest bend. The keeping qualities of the flowers are unsurpassed; this, with the wonderful coloring and perfect stems, makes it an outstanding florists' dahlia. **Plants \$5.00**

MARSHALL'S SENTINEL—True to name it stands high and erect blooms on strong stems 5 to 6 feet. Its beautiful rose pink held high above foliage adds to its prominence in the garden. It blooms profusely from early season until frost and has never showed an open center, owing to its good keeping qualities, we recommend it for exhibition purposes. **Plants \$5.00**

BURNETT'S ROSE (Dec.)—Bright old rose, each petal edged with violet. This is an exquisite and beautiful dahlia which is especially well suited for cutting, as the glowing coloring of the blossoms make them most attractive for vases and baskets. The flowers are of a large, fully double, regular type and keep for a long time after cutting. The bushes grow tall, very vigorous and the stems can be had in a three-foot length with the least amount of disbudding. **Plants \$5.00**

MARSHALL'S WHITE—An ideal pure white Hybrid Cactus, a remarkable vigorous grower, very free flowering on extra strong, stiff stems, which hold the large flowers facing. In our opinion, the best white of this type. Recommended for either exhibition or cut flowers as it has excellent keeping qualities.

Tubers \$10.00 Plants \$5.00

OUR PREVIOUS INTRODUCTIONS

CHEMAR'S BLUE GEM, Decorative—As the name suggests, the color is a very glowing bluish purple almost a Royal purple. Stems are straight and hold the large blooms erect; are from 12 to 20 inches in length. The plants are strong growers, large and constant bloomers and a heavy tuber producer. Having a large stock, we are offering it at a very moderate price.

Tubers \$3.00

CHEMAR'S ORANGE BEAUTY—A brilliant orange, shaded lighter toward center. A Sport from Jersey's Beauty, an exceedingly attractive decorative Dahlia, which will be highly appreciated by those who prefer a bright orange. Being a Sport of Jersey's Beauty, the habits and growth are identical, the only difference being in color. It is bound to be popular with florists for decorative purposes. It has never reverted to the color of its parent.

Tubers \$5.00

CHEMAR'S EUREKA—(I have found it). One of the best white decoratives in cultivation, an extra strong grower that insects will not attack. It will produce more large flowers than any other white. The large blooms are held erect on extra long straight stems and keep well when cut. Under certain soil conditions, an occasional bloom will show a slight pink suffusion at the center, which disappears when the flower matures.

Tubers \$5.00

CHEMAR'S GIANT (D.)—A beautiful shade of pure orchid, produces 8 to 10 inch flowers in abundance, facing on a long stiff stem high above a strong growing plant. Very little disbudding necessary to produce the large blooms.

Tubers \$5.00

CHEMAR'S MASTERPIECE—A huge incurved cactus flower of orchid pink or soft orchid coloring which every one loves. The flowers are extra large of perfect form, under all conditions; are so placed on extra long stems that they show their beauty to the best advantage, producing ten-inch flowers in abundance. This has won a certificate at the N. J. Trial Grounds.

Tubers \$3.00

CHEMAR'S PURITY—A most perfect white decorative seedling from Jersey's Beauty which it resembles in everything but color. The petals are long and straight, the center excellent, size immense, stems extra long and stiff, holding flowers high up above a strong, sturdy plant. When the flowers first open they show a slight trace of ivory near the center, this gradually changes to a pure white at maturity. Certificate at the A. D. S. Trial Grounds in 1927 and scored eighty-six (86) at the Nebraska Trial Grounds.

Tubers \$3.00

CHEMAR RAVEN—The color of this dahlia is so dark that it is almost black, though upon close inspection it will be found to be deepest maroon. A very striking variety that is liked by everybody. We always have a Raven planted at the beginning of our display garden because of this. The plant is very tall and the stems are perfect, holding the large flowers proudly erect. We can recommend this dahlia for all purposes.

Plants \$3.00

CHEMAR'S QUEEN (D)—A very large bright yellow. A color that you will never tire of; there is no trace of any other color in the flower. Average nine inches without forcing; the large flowers are held perfectly erect on the long cane-stiff stems. The bush is a vigorous grower of average height, and is particularly striking in the garden because of the sharp contrast between the quantities of yellow blooms rising well up above the heavy dark green foliage. The flowers keep a long time when cut. It will grow in water. We firmly believe that this Chemar's Queen will be one of the most popular Dahlias when it becomes generally known. This has won a certificate at the A. D. S. Trial Grounds in 1927.

Tubers \$4.00 Plants \$2.00

CHEMAR'S TREASURE—A very large, deep, full-centered, decorative dahlia. A pure golden bronze color all through, with large petals. Has never shown an open center at any time of the season. A most attractive flower in the garden, and is much admired by all who see it growing. Produces an abundance of large exhibition flowers and is just as good for a cut flower. The blooms are carried on a wonderful stiff cane-like stem, above the foliage, and is a wonderful keeper. We guarantee this Dahlia to give satisfaction or we will refund purchase price.

Tubers \$5.00

CHEMAR'S 2406—A very large decorative, held facing on an 18 inch stiff stem well above the foliage; of a strong, sturdy plant which is covered with blooms from early July until killed by frost. It never burns or shows an open center, and the shade is different. After searching several color charts, the nearest we can find is one in the Standard Color Chart of America, which is Ruby Fuchsia with a bright, velvety sheen, a color you will admire. Flowers will last several days when cut.

Tubers \$2.00

MARSHALL'S CHRYSANTHEMUM (H. C.) A new break in Dahlias, the flowers of this wonderful dahlia resembles a huge chrysanthemum; they are held upright on a long, stiff stem. The petals curve back to the stem making it a very deep flower. The color is bright orange speckled and flaked bright rose. A tall strong grower.

Plants \$5.00

YORK AND LANCASTER (War of Roses) Dec.—An exceptionally fine exhibition or cut flower. The blooms are very large of fine form, held erect on three foot stiff stems. It has splendid keeping qualities when cut. There is nothing to compare with its beauty. Color, a bright crimson, each petal tipped pure white. A good tuber producer.

Tubers \$5.00

MRS. A. E. WHEELER (Marshall-Chemar)—A wonderful new decorative that has attracted much attention in our gardens. So many linger by it and say "Wonderful". It won the first prize at the A. D. S. show in 1927. The color is beautiful, fuchsia, shading to magenta with reverse of petals striped white showing in the center. The habits are ideal; stem long and stiff; flower habit profuse; blooms large and never shows an open center.

Tubers \$4.00

MANY DAHLIAS NOT LISTED

If you do not find the varieties you want in this catalog, write us. We have many of which stock is too limited this season to catalog. But we will be glad to quote you our lowest prices on them.

Introductions From Other Growers

They are All Dahlias of Supreme Merit

We've picked the best from East to West.

In visiting the many shows and gardens last fall, we selected the following as the best of the new varieties grown or exhibited. They are all good rugged growers, have fine large flowers and good long stems, which hold the flowers well above the foliage. The most of them have won the highest awards wherever shown. The descriptions are, in most cases, the originators.

ASBURY PARK—A truly marvelous, new Formal Decorative Dahlia of extreme size and a beautiful autumn color—bright strawberry red, flushed with salmon and tinted with old gold toward the tip of the petals. Full centered with gracefully arranged petals. The blooms are carried on stiff stems. They are held boldly erect and last a long time after cutting. The constitution of the plant is robust. The foliage is large, leathery and healthy, and not troubled by insects. On well-grown plants the blooms measure 9 inches and more across. It was awarded seven First Prizes and a Certificate of Merit.

Plants only \$8.00

CORA BUTTERWORTH (Chapman) Dec.—Winner as Best Undisseminated Decorative Seedling in New York, and also the runner-up Medal in The American Home Sweepstakes Class at that show. The judges had a real tussle in making their decision, and an enthusiastic audience of spectators. The color is clear, silver-yellow, and the long waved petals are held at the end of an extra good stem. A Dahlia of clean-cut crystalline beauty.

Plants \$4.00

COQUETTE—(F. & M.)—In this most robust and beautiful Decorative dahlia we have the much desired combination of red and gold. Face of petals of velvety Musketeer red, blending with gold and shading to a golden sunset color at points; back of petals gold. Thick, fluffy flower composed of many curled and twisted petals which give the impression of a glowing sunset. An exhibition flower of great beauty. Flower at least twelve inches above the first pair of leaves, stem rigid, foliage dark green and leathery, therefore insect proof, free bloomer. In cutting flowers for exhibition it is well to have them fully matured, when it will be found to be an excellent keeper. A 1929 introduction that made a decided hit.

Tubers \$4.00 Plants \$2.00

DERRILL W. HART, (Dec) (Broomall)—This Dahlia was one of the best growers in our gardens the past season. Color is a copper, shading to henna and brown, the center petals showing a decided golden tint. A wonderful grower, with no apparent attraction for insects.

Tubers \$5.00

We are organized to give quick service. Except for heavy rush periods, we mail out orders the same day as received.



FRANK MILLER (Burch)—A very large bright lemon yellow decorative on a long straight stem. Wins every time it has been shown for two years. Best individual and best six in 1928. A knockout this year as a side basket of 25 and a pedestal basket of the same number (see cut). "The best decorative in America," G. V. Warren. Won gold medal at Atlantic City as best 1930 introduction. **Tubers \$8.00 Plants \$4.00**

DORIS FELLOWS, (Fellows) Formal Decorative—A very fine new introduction that we are proud to add to our catalog. The fine, large, perfectly formed flowers of pale yellow, shaded to salmon at the tips of the petals are carried on absolutely stiff stems. When the medium tall bush is in full bloom, it looks like a large bouquet. A most desirable new variety; very vigorous and large.
Tubers \$7.50

DOROTHY STONE, Dec. (F. & M.)—A large brilliant pink flower, that might have won the sweepstakes, if it had been shown in open competition. The color is brighter and richer than Kathleen Norris, and the substance is heavier.
Tubers \$7.50

DR. ELIAS H. BARTLEY (D)—Enormous flowers of beautiful form and a clear orchid pink. Winner of the American Home Achievement Medal at Rockville Centre in best flower class, also first in largest flower class at Valley Stream, N. Y., show during 1929. In 1928, took first in American Dahlia Society Show in N. Y. in the largest perfect decorative class. This flower can be easily grown to 12 inches.
Tubers \$5.00

ELIZA LONDON SHEPARD—Irregular Dec. Size 11x5 inches. Height 5 feet. Color, deep orange gold. A 1929 Roll of Honor Dahlia.
Tubers \$10.00

GALLI-CURCI (Dec.)—This splendid new blossom is large and unusually deep, carried on long stems which are sturdy. Color brilliant salmon orange with good suffusion. As a seedling this bloom had many medals and special awards. We recommend it highly.
Tubers \$2.00

HELEN IVINS (No. 38)—Large exhibition type decorative of a beautiful orchid-lavender, especially attractive under artificial light. Stems long, slender and upright, flowers large and plant laden with blooms from beginning of season until frost. Color is richer and more lasting than the usual run of lavenders having a more pink tone. Plants tall, sturdy; tough, leathery foliage.
Tubers \$5.00 Plants \$3.00

JEAN TRIMBEE (Trimbee) (H. C.)—This beautiful variety is a native of Canada, having been raised by Mr. Trimbee of Lambton Mills, and exhibited at Toronto for the past two years. The flowers are very large, many over 12 inches, and a beautiful rich Petunia violet in color. It has a strong, vigorous habit and the large attractive flowers are produced very freely. It was easily one of the most outstanding varieties in my exhibition garden the past year, and we feel highly honored at being asked to introduce so unusual and outstanding a variety.
Tubers \$7.50

JUNE FELLOWS (Fellows) Formal Decorative—Another new variety we can highly recommend. The flowers are large, carried on good strong stems, and have perfect form. The color is lavender with a suffusion of mulberry, very novel and beautiful. The tall bushes are always in bloom.
Tubers \$7.50

KATHRYN CHARMAN, Dec.—Size 9x6 inches. Height 5 ft. Another 1929 Roll of Honor Dahlia. Color combination most unusual, blending from rich bronzy red to golden bronze at the center. A cross of Amon Ra and Champagne, that has all the good qualities of both. Two vases of 8 blooms each on 4 foot stems on the floor at the base of two columns at the Camden Show aided materially in making ours the most outstanding exhibit. The plant is a strong, vigorous, healthy grower.
Tubers \$5.00

KING MIDAS (Dec.)—Size 12x5 inches. Height 4 feet. Color pure golden yellow. Form perfect; stems, long stiff and straight, holding up the giant flowers. First prize winner everywhere last year. Rated as one of the six greatest of all exhibition Dahlias, and the greatest of all golden yellows.

The plant is a strong, sturdy grower, absolutely healthy, and an early free and continuous bloomer. The flowers are so full that they last on the plant for weeks. Just pull out the back petals from time to time and that wonderful center does the rest. Any of the branches will give 12 inch flowers if fed. For cutting, top out twice, otherwise, the flowers are too large. Derrill W. Hart says: "King Midas (Peacock) Decorative. Last year we prophesied success for this good yellow. It has gone far beyond our prophecy, and in our estimation it is one of the six greatest exhibition Dahlias of Eastern origin. King Midas is a one tone golden yellow flower of great depth, and produces six and seven perfect blooms at one time." **Tubers \$10.00 Plants \$5.00**

KATHERINE COLE (McDowell) Dec.—At the last New York Show this beautiful Dahlia was shown under number and won the Darnell Cup for the best keeping variety. Many people said that it was easily the most beautiful Dahlia in the Show. I had seen the Dahlia before and was impressed with it, as it had the long-stemmed habit that I liked so much. I have been fortunate in being able to get this splendid variety to add to my new introductions. In color it is a beautiful combination of light pink and cream. The tips of the petals are pink, shading to cream, with a pink center. Imagining an Eagle Rock Beauty on a Jersey's Beauty stem would give one a fair idea of the beauty of this flower. The stems are long and stiff, yet not thick, and the flower is always looking you in the eye. The foliage is thick and healthy and, above all, it is a free bloomer. Stock limited. **Tubers \$7.50**

MABEL DOUGLAS (Thompson-Waite) Dec.—This is one of the largest of the new Dahlias and a welcome Canadian introduction. Color is a clear pastel lavender. It is a flower that might easily become popular for the Largest Bloom classes. It is one of those flowers that will measure much larger than it actually looks, on account of the graceful curl of the long petals. **Tubers \$7.50 Plants \$4.00**

MARGARET F. WYLIE (Fraser) Dec.—This was the outstanding new Dahlia at Hartford, and almost a new color. A bright, vermillion rose-red, with the reverse of each petal rose-pink and silver. Many of the petals are slightly curled, and the silver tints that show up make the flower very distinctive. It is unlike any Dahlia we know, therefore, we are at a loss to make any comparison, but we can say that it is a free flowering variety with practically perfect growing habits. Hartford florists are already using it as a cut flower. **Tubers \$7.50 Plants \$4.00**

MARSHALL'S MATCHLESS (1929 Introduction)—A giant Hybrid Cactus that can easily be grown 11 inches in diameter. Ridgways color chart describes it as spinel pink, but a better description would be a bright cattleya. The large blooms are held erect on 3 foot stems and the keeping qualities are excellent. The petals terminate in sharp points giving it a stag horn appearance. **Plants \$5.00**

MAY DEARBORN SCHWAB (Meussdorffer) Dec.—The color of this very interesting Dahlia has been described as Chinese violet. It has immense blooms borne on strong stems of great length. At the show of the Dahlia Society of California, it won the American Home Achievement Medal. **Tubers \$10-00 Plants \$5.00**

MARIE, Dec.—1930. Size 7x3 inches. Height 3½ feet. Color same as Jersey Beauty, but deeper and brighter. It has a freshness and brilliancy lacking in Jersey Beauty. It is an early and free bloomer, and full to the center to the last. The flowers are larger than Jersey Beauty, and it is a much more profuse bloomer. Also, they are perfectly full in the center, until killed down by the frost. **Tubers \$3.00**

MILDRED BROOKS HOOVER, Dec. (Broomall)—Color is a spinel red. A most distinct and refined flower of large size and splendid form. **Tubers \$5.00**

MISS DELAWARE (Swift 86) c g e, Blooms 10x5, Bush 5 ft.—Is an immense clear pink. This dahlia created a sensation at the New York Show, 1928. It won first prize, a blue ribbon, for the best two-year-old undisseeded seedling decorative in the show. It also won the first prize in Wilmington, Del. Show, 1928, as the best seedling in its class. Its foliage is immune to all insects. One of the best pinks on the market. A sturdy grower and prolific early bloomer. A very good keeper and tuber maker. It is one of the first to attract attention in the garden and shows. **Tubers \$5.00**

MONMOUTH CHAMPION (Dec.) (Kemp)—Winner of special award at Elizabeth, N. J., and as best undisseeded seedling at Red Bank, N. J., where it defeated some of the top notchers; it instantly found favor with all who saw it by its great size and brilliant flame color. It is the only dahlia we know in its color. **Tubers \$7.50**

MRS. ALFRED B. SEAL (Seal)—A beautiful old rose decorative. The flowers are huge, of great depth and substance. Strong tall bushes with excellent stems. Awarded the American Home Achievement Medal at the Palace Hotel Show for the best 1928 introduction originated west of the Rockies. **Tubers \$5.00**

ORINDA (Newbury-Fraser) Dec.—Winner of the American Home Achievement Medal at Boston. Also as Best Decorative Seedling and the sweepstakes prize in the seedling class. Orinda impressed the judges and visitors at Boston, as a great Dahlia. The color is dark mauve-pink. No one of the new Dahlias is sturdier nor has better blooming habits. We are proud to see such varieties win our Achievement Medals. **Plants \$4.00**

PRESIDENT HOOVER—Irregular Decorative. Size 8x5 inches. Height 6½ feet. Color, peach red, blending to begonia rose; very bright and luminous. Reflex, begonia rose, veined and suffused lavender. A thoroughbred, being a cross of Jersey Beauty and Papillon. The flowers have the beautiful formation and size of Papillon, with the depth, full high center and long stems of Jersey Beauty. The plant is of the Jersey Beauty type and habit of growth, but is much stronger and sturdier.

It is an extremely early bloomer, strong and vigorous. Its dark green healthy foliage is resistant to disease and insects.

Tubers \$7.50 Plants \$4.00

ROBERT E. LEE Semi Cactus.—Size 10x6 inches. Height 5 ft. Color, bright luminous cardinal red; reflex, lighter. Not only a 1929 Roll of Honor Dahlia, but at Camden, in the open to all class, it won, as the best red or crimson, over those grand prize winners Elite Glory and Fort Monmouth. It is not only a brilliant glowing red, but it does not burn or fade. The flowers are carried from facing to upright. They are always full to the center. We guarantee it will come full in the South and California, late in the season when so many come open centered. It was named by an enthusiastic Southerner, as the first Dahlia he had seen that he considered was appropriate and worthy of the name.

Tubers \$1.00

ROXY (Berwick Dahlia Gardens) Hybrid Cactus—A deep, strong substantiated flower on ideal stem, which we believe will make a great flower for commercial cutting. Color is most pleasing—gold in center, surrounded by tints of apple blossom pink and then shaded to a flushed combination of soft rose and primrose. Won in Best Six Blooms of Undisseminated Seedlings at Baltimore.

Tubers \$10.00 Plants \$5.00

SANTA BARBARA (Pelicano) Dec.—Truly outstanding, which has won prizes as a seedling for the last 3 years, and this year was awarded the American Home Achievement Medal at the Dahlia Society of San Francisco show. It is a beautiful soft rose pink, tall with fine foliage and excellent carriage. In addition to the Achievement Medal it was adjudged the best Dahlia in the show.

Tubers \$8.00 Plants \$4.00

TOMMY BURCH, (Burch)—This is a Bi-color. A decorative white petal edged with a pure pink stripe about one-eighth of an inch wide. Many of our friends have been "hurt" by our refusal to sell it until it "proved up". This year we gave it our name and introduced it.

Tubers \$5.00

THOMAS A. EDISON (Dahliadel 88), 1930, g e Bloom 9x4½, Bush 4 ft.—This gorgeous Formal Decorative, selected and named by permission of the famous electrical wizard, met with his complete approval when viewed at his West Orange estate. Furthermore, it has met with universal approval in the dahlia shows of 1929 and at our nursery in Vineland. The staghorn petal formation, the dark green insect-resistant foliage, the cane-stiff stems, and its thrifty growing habit leave nothing to be desired. In introducing it to a dahlia-loving public for 1930, we do so with the knowledge that it is worthy of and will carry the usually Dahliadel guarantee, insuring its performance in your garden.

Tubers \$10.00

WATCHUNG WONDER (Smith 88), 1929, g e Bloom 10x6, Bush 5 ft.—A spectacular dahlia of a rich royal red with a touch of gold at the center of flowers, with an occasional yellow petaloid to enhance its beauty. Flowers might be described as being almost on the end of the stem and have unusual keeping qualities, for the back petals can be removed when withered and the centers will open out to perfect blooms.

Tubers \$7.50

DAHLIAS OF SUPREME MERIT WHICH HAVE BEEN INTRODUCED RECENTLY

Each year brings its quota of Dahlia Novelties. Some prove consistently good while others fail to measure up to the standards demanded by keen dahlia lovers and are discarded. We have tried out all the varieties listed herein and have carefully tested their qualities. We feel that the following list contains a peerless collection of the better varieties. A selection of any of those offered will insure the greatest satisfaction and pleasure. Owing to the unusual demand for good dahlias we earnestly recommend orders being placed as early as possible.

ALICE GREEN (Dec.)—A strong robust grower, with thick leather like foliage, that is practically immune from attacks of insects. The dark green foliage is a pleasing contrast to the very large orange colored blooms. Stems are long, perfect and hold the large blooms high above the foliage. A master dahlia at a price far below its real worth. **Tubers \$3.00 Plants \$1.50**

ALTESSE (Bessie Boston)—Yellow dahlias are becoming almost as abundant as red, but you really cannot get too much yellow, and Altesse is not a commonplace shade. It is a bright buttercup, shading deeper at the center. A graceful formation of petals, which may take a hybrid cactus form in a cool, foggy climate. Stem is hard as iron and holds the big flower erect. Bushes are low-growing and bloom early and freely. **Tubers \$2.00**

AZTEC GLORY (H.D.) (Broomall)—A rich clear golden yellow that glistens in the sunlight. Color, form, size and stem are all that one can desire. The artistic effect of the large blooms is unsurpassed in any other dahlia. The plant is of medium height, a healthy grower and prolific bloomer. **Plants \$2.50**

AMERICAN TRIUMPH—The brightest shade of pure oriental red. The large flowers are deep and with good substance and are held erect. It will not only make a most worthy addition to the Cactus class in which there are so few good exhibition varieties, but an exceptionally good garden and cut flower as there is no better keeping Dahlia in existence. Winner of the American Home Sweepstakes at New York for the most outstanding new seedling in the entire Show. **Tubers \$7.50 Plants \$4.00**

A. O. KENNEY Dec. (Darling)—Large blooms of perfect form and great depth. Carried on good stems. Color a rich bronzy buff shade of one tone, but with center tinted bronze. The entire flower has the appearance of being liberally sprinkled with gold dust, producing a striking effect. Plants grow medium in height and are very free flowering. In a class by itself. This dahlia was placed on the honor roll of the American Home Magazine, December, 1928. **Tubers \$6.00**

BARBARA REDFERN (Dec.) (Redfern)—Color is a delightful blend of old rose and old gold, immense in size with great depth, flowers are borne on heavy, stiff stems. A particularly free bloomer, plants are tall and vigorous. **Tubers \$2.00**

BROCKTON BEAUTY (Dec.) (Carver)—A very large flower which commands attention when seen growing in the garden. A profuse bloomer of great depth and size, flowers remain large all through the season, being as large at the end of the season as when they start blooming. Color is a pinkish lavender shading to creamy white center, with reverse of petals pinkish lavender. A wonderful keeper with a fine stiff stem holding the large flowers well above the foliage. **Tubers \$5.00 Plants 2-00**

CITY OF EVERETT (Dec.)—A large yellow on good long stem. Grows eight inches without disbudding. Stock limited as this is a new seedling. A distinct flower of wavy, shaggy petals. Beautiful light yellow, different from the rest. **Tubers \$2.00**

CHARLOTTE LAFRENZ (Dec.) (Seal)—A large attractive new Dahlia. Color gold shading to apricot in outer petals. Form and center good. Growth and stems strong. **Tubers \$3.00**

CITY OF TRENTON (Dec) (Prentice)—Face of petals, a rich glowing tangerine, reverse crushed strawberry red. Petals curl gracefully, giving a two-tone effect. **Tubers \$2.00**

CLANSMAN (Dec.) (Mills)—Certificate of Merit at Storrs, 1926, as an exhibition flower. It is also one of the best cut flowers of its color. It is very free, carrying six to eight, 8 to 9 inch blooms on long stiff stems at one time. Color (judges' description) a beautiful apricot orange, center darkening to Jasper pink, radiating a golden sheen that instantly attracts the eye. **Tubers \$3.00**

COL. CHAS. A. LINDBURGH (HC) (Fisher & Masson)—Blooms medium to large on very strong stems. Color rose with lavender tints. Plant growth vigorous. **Tubers \$2.50**

DORIS CANNEY (Seal) (Dec)—The large blooms of a rich, golden apricot coloring are carried on strong stems above a most attractive bush, the foliage of which is exceptionally dark green. **Plants \$2.50**

DR. JOHN CARMAN, (Deering-Do) Dec.—No Dahlia gives you more for your money in the garden than this big Decorative. It is a real specimen flower and worth any extra attention that might be given to get it into the show room in perfect shape. The color is lighter than in 1928, but more brilliant. **Tubers \$5.00**

EAGLE ROCK BEAUTY (D) (Broomall)—Large, well formed flowers on medium stems. Color pink and cream with amber suffusion. Plant of medium height, stem inclined to be soft if forced; growth variable. **Tubers \$2.50 Plants \$2.00**

EAGLE ROCK SUNSHINE (H.C.) (Broomall)—A strong upright grower producing very large well formed blooms with good centers carried on perfect stems. Blooms late. **Plants \$1.50**

EDNA FERBER (H.C.) (F.M.)—An exhibition dahlia with an exceptionally fine stem. Color is a glistening coral shading to old gold at base of petals. One of the first flowers to attract attention both in the field and on exhibition table on account of its extreme beauty and size. Petals curled and twisted making a very full flower. **Tubers \$2.50**

ELITE GLORY (D) (Kennedy)—Red, mammoth size, very heavy stems, sturdy growth. **Tubers \$2-00**

ELIZA CLARKE BULL (Boston 82), g e, Bloom 8x4, Bush 4½ ft.—The largest white decorative from the West. A free bloomer, of perfect form and good substance that does not burn in extreme heat. Bush of medium height. A desirable variety with light green foliage. **Tubers \$1.50**

ELKRIDGE (D) (Griffiths)—Size medium to large on good stems. Petals thick and waxy in appearance having good keeping qualities. Growth good, centers fair. **Tubers \$1.50**

EL REY (O. & C.) Dec.—This is a large beautiful flower of the Jersey Beacon type, in a rich golden salmon. It is a strong grower with fine foliage. As winner of the American Home Achievement Medal at the show of the Dahlia Society of Los Angeles it occupied one of the high spots in the Southern California season. **Tubers \$6.00**

FAIRMOUNT (704) Dec.—Seedling of the well and favorably known Altamont. A pure pink in a beautifully proportioned bloom, 8 to 9 inches in diameter, which is held well above the foliage on a long stiff stem. Plant is a healthy and vigorous grower, but not as tall as Altamont. A fine variety that is destined to become a prime favorite with all who are partial to pink colored Dahlias. **Tubers \$5.00**

FIREFLY (Willow Gardens) Dec.—One of the most vivid Dahlias in our gardens. A fine petaled decorative of fiery orange. A very free producer of large flowers on straight stiff stems. **Tubers \$3.00**

FRANCES MINTON (Dec.)—One of the best, if not the best yellow to date. Wonderful foliage on perfect stems, size averages eight inches and very deep. A lemon yellow distinct from most yellows. Stock very short. Good Dahlia critics pronounce this a winner. **Tubers \$7.50 Plants \$4.00**

FRANCESCA—The flower is a perfect decorative form large in size and keeps well as a cut flower. The stems are extremely long, from 18 to 36 inches. A vase of this variety easily took first prize at our 1928 show for the best vase of one variety. In the vase of 25 blooms there was no stem less than 28 inches. Stems rigid and erect, producing a mass of excellent roots. Almost a "break in color" being a brilliant bronze with lots of bright orange through it, reverse of petals a brilliant orange. As compared with other new varieties, it should perhaps be listed at a much higher price. **Tubers \$3.00**

FORT MONMOUTH (Kemp 90) g e, Bloom 11x4, Bush 6½ ft.—This giant created much interest at the eastern shows the past season. The predominating color is a rich claret with brightness, unusual in darker tones. Flowers are full centered and well formed, borne on long, stiff stems high above the foliage. A very prolific grower and bloomer. One of the outstanding novelties of the year, winning in the largest bloom class at the Trenton Show. **Tubers \$4.00**

FORDHOOK GOLD CREST (Burpee 80) g Bloom 8x4, Bush 4½ ft.—A spectacular autumn tint, combining shades of yellow, salmon pink and rose. Flowers are held erect above all the foliage. A fine garden variety. D. S. of N. J. Cert. **Tubers \$3.00 Plants \$1.75**

FRED W. PATTERSON (Kemp 12-7) (H.C.)—The color is difficult to accurately describe, and as near as we have is lavender pink, with deep amaranth pink reverse. A beautiful color combination that instantly attracts and holds the attention. With us the flower averages 10 inches and over in diameter, but in a letter received from a grower who had it on trial the past season, he says the flower was as large as Fort Monmouth with him, and that it was about the best Dahlia in his collection. The long, stiff stem holds the flower high above the foliage. Plant is vigorous. A most excellent garden and exhibition variety. Height 7 feet.

Tubers \$5.00

FORDHOOK SUNSHINE (Dec.)—Immense blooms on perfectly straight stems, blooms looking skyward. Extra large. Color salmon and fawn flushed yellow. A flower of great beauty. Certificate of Merit, A. D. S., Storrs and N. J. D. S., New Brunswick, 1927.

Tubers \$2.50 Plants \$2.00

FORT WASHINGTON (Dec.) (Reinfleisch)—A very tall, strong grower producing extra large blooms with good centers carried on long, strong stems. Color dark maroon. Recommended for exhibition.

Tubers \$2.50

GOLDEN TRUMPET, H. C. (Shaw)—One of the most sensational varieties ever originated for cut flowers. Its color is a soft golden yellow shading to an amber center, with rolled petals. The stems are long and stiff, and can be used extensively by florists for decorating purposes. This plant does not have to be heavily disbudded as buds left on stalk will bloom after cutting, which is out of the ordinary in dahlias, and helpful for cut flowers.

Tubers \$6.00

GOVERNOR ALVAN T. FULLER (H. D.) (Beatrice)—This wonderful, massive, deep glistening, full centered Tyrian Rose beauty was named in honor of his excellency Governor Fuller, who admired it greatly. This dahlia has all the fine points that are required. Plants grow 3 to 4 feet in height and branch freely with healthy leathery foliage. An early to late bloomer. The massive full centered 8 to 10 inch flowers are carried on heavy, cane-like stems. This dahlia was awarded the Thos. H. Hughes beautiful Silver Cup at the Dahlia Society of New England show held at Boston, Sept. 8 and 9, 1928, for the best basket of dahlias in the show.

Tubers \$3.50

GRACE JOCELYN (Kemp 80) g e, Bloom 9x4, Bush 6 ft.—This seedling of Mordella is an exquisite tone of Begonia rose and reddish salmon. Full-centered flowers with good stems. A healthy grower and prolific bloomer.

Tubers \$3.00

GRACE RICORDS (Ricords-Dahliadel) c g c, Bloom 8x4½, Bush 5½ ft.—A decided outstanding novelty for 1929. This decorative would have probably won over Kathleen Norris had it not been for storm injury when exhibited at the Camden Show, as it was a very close second and so different from anything else in form and color. Flowers are large with full, high centres, tipped and suffused lavender on a white ground, petals numerous and decidedly cleft, giving the flower an artistic formation. Bush a tall, open and strong grower

Tubers \$5.00

HARRY MAYER, Dec. (Seltsam-Success)—One of those varieties that catches the eye in the show-room or garden. Color is a silver lavender with the reverse of the petals deep lavender. Sturdy growing habit and heavy texture.

Tubers \$2.00

JANE COWL, Dec. (Downs)—The outstanding dahlia of the year in every show. A consistent prize winner throughout the country. It is a large deep flower with colorings of warm buff and old gold, blending to a bright salmon at its perfect center.

Tubers \$2.00

JERSEY'S GLORY—A magnificent bloom both in color and form. Color is a sparkling orange intermingled with yellow. Huge flowers of perfect outline held on long, rigid stems. Vigorous habit of growth.

Tubers \$4.00

JERSEY'S TRIUMPH (Waite) Dec—Winner of one of the seedling classes in the Open to All at Red Bank. Color is a real autumn shade of bright copper flushed with salmon-bronze. It is a very beautiful Dahlia in the garden, with fine, long stems for cutting, and has already proved its ability to sell as a commercial cut flower. It is a seedling from Jersey's Beauty.

Tubers \$7.50 Plants \$4.00

JUDGE LEON McCORD (Boston)—An enormous flower, grown on an absolutely stiff, upright stem. The color is the deepest shade of gold, with a reverse of old rose. Bushes grow to medium height, but the flower stems grow right out of the foliage, and are long and leafless. A regularly formed flower which lasts two weeks on the bush and is excellent for cutting. This is the brief description we wrote in the garden of this variety, omitting, however, to state that this is one of the deepest dahlias we have ever seen as well as one of the largest, and what more is there to be said.

Tubers \$5.00 Plants \$3.00

JIM MOORE (Loller) Dec—One of the outstanding new seedlings at Baltimore and of very unusual appearance. The color is a clear primrose yellow, shading to gold, with tints and flushes of salmon throughout the flower. It is a deep, extra long petaled flower. It looks like a definite cross between Watchung Sunrise and Siskiyou, with the color of the former and the form of the latter. However, it has more depth and better centers than Siskiyou. As distinctive as anything shown this year.

Tubers \$10.00 Plants \$5.00

JUDGE SHINN (Kemp 83) g e Bloom 8x3½, Bush 7 ft.—Color a pleasing combination of gold and salmon, gold predominating at the center and salmon in the outer petals. This dahlia was named for the Hon. C. C. Shinn, an ardent dahlia fan, of Atlantic City. It is fine for background planting, as it is a tall, vigorous grower.

Tubers \$5.00

KATHLEEN NORRIS (F. & M.) c g e Bloom 10x5, Bush 5½ ft.—This outstanding exhibition dahlia is a true rose pink, deepening later to mallow pink with young central petals a lighter shade. Petals are broad and overlap each other with twisted tips. Blooms are held erect on long, strong stems. It is a healthy grower, having dark green leathery foliage, which is decidedly insect repellent.

Tubers \$5.00

KEMP'S VIOLET WONDER Dec. (Kemp)—The best violet colored Dahlia to date. The predominating color is a rich Naphthaline Violet, with underlying tone of royal purple, lightening to bluish violet at tips of petals, with deep lavender reverse. The strong, vigorous growing plants produce blooms of massive size on fine strong stems.

Tubers \$4.00

MABEL GOODACRE (Goodacre)—A new California creation. This large decorative received a Certificate of Merit at Storr's 1926. A new England grower writes that it is the best dahlia he grew the past season. This being the introductory season, the price is considerably below new Dahlias with such a high rating. Color an even mauve; early in season an on opening out rich lilac.
Tubers \$3.50 Plants \$2.00

MAY TROWER, Dec. (Seal)—A large, deep, artistic flower, ranging in color from palest gold to a deep golden apricot. Blooms are held erect on good stems.
Tubers \$3.00

MINAMOTO'S PINK (Boston)—Is a deep pink lavender. Petals are long and narrow, with an inclination to roll. At no time could it be classed as a hybrid cactus. Flowers are extremely large and borne on very long stems. Good for a cut flower or for exhibition; are profuse bloomers, starting early and continuing until the end of the season with full centers.
Tubers \$3.00

MINNIE EASTMAN (Eastman) c g e, bloom 8x4, Bush 6 ft.—This fine introduction has been a popular winner at both the Baltimore and Maryland Dahlia Society Shows for the past three years. It is a very pretty hybrid cactus of a bright flame color with undershadows of deep yellow. Stems, long and erect. Bush growth healthy, with smooth, glossy foliage.
Tubers \$5.00

NATURE'S MASTERPIECE (D.)—A most elegant rich combination of old rose, cinnamon and metallic bronze, blended into one color, suffused with mulberry. In addition to this, its effectiveness is increased by a violet shaded reflex. The large handsome blooms are held erect on 20 to 30 inch stems. Plant is a robust grower and very prolific.
Tubers \$5.00 Plants \$2.50

PRINCE OF PILSEN, Dec. (Shattuck)—The most powerful Dahlia in my garden the past season, except Jane Cowl. It is a flower of gigantic proportions, color is purple with lighter shadows and petals twist a little showing the silver reverse which adds to its beauty. It has broad, overlapping petals with twisted ends and has a fine high full center. The stiff stems are from twelve to eighteen inches long holding the flowers way above the foliage. The flower is deep and grows to eleven inches in diameter. Foliage is dark green and leathery and insects have never bothered it. Height of plant six to eight feet. This is a dandy for size and stem and for you who are looking for the big fellows this is one. Stock limited.
Tubers \$7.50 Plants \$4.00

PRINCESS XENIA (Andrews-Noonan) (H.C.)—The largest and best pink of this class. Beautiful form, immense size, stiff stems, strong, vigorous, sturdy plant, a free and continuous bloomer, while last, but not least, a wonderful live, lustrous color, a bright tyrian pink, reflex pink. The plant is a strong, vigorous, sturdy grower, of medium height, branching and producing the giant flowers freely on long cane stiff stems. A superb cut flower variety on account of its clear color, good stems and remarkable shipping and keeping qualities. Awarded Certificate of Merit at Scorr's Trial Grounds in 1929.

Tubers \$10.00 Plants \$5.00

REGAL (Bessie Boston) 1928 D.—A variety which can be grown without trouble ten inches and with careful disbudding twelve inches. The plants bloom early and continue to flower profusely the entire season. The color is a bronze, heavily suffused with old rose, shading to gold at the center. Stem is absolutely rigid and carries the blossoms well out of the foliage. This decorative won the gold medal at the Palace Hotel Show in 1926 for the best six blooms of a three year old seedling. It also won the Western Horticultural Prize at the same show in 1927 for the best twenty-five blooms.

Tubers \$3.00

SEAL'S CALIFORNIAN (Seal) 1929—A large, bold and immensely attractive decorative with a perfect stem. The color is bright golden yellow at the center with a suffusion of red-amber on the reverse and through the outer petals. A rich glowing yellow that holds its color well at night.

Tubers \$3.00

SISKIYOU (Broomall 80) g e, Bloom 10x3, Bush 3½ ft.—Here we have the dahlia that has won in the largest bloom class repeatedly, but on diameter, not considering depth. Flowers held erect on long, strong stems. Color, pink tinted mauve. Petals rather blunt and flat.

Tubers \$1.50

SPOTTSWOOD BEAUTY (Dec.)—This is one of the most beautiful colored dahlias in the list of 1928 introductions. Color is a clear Chatenay pink, shading to lemon yellow at base of petals. Flowers are 7 to 8 inches in diameter, and of great depth, and are borne on long cane-like stems high above the foliage. Plant is a very healthy grower, and attains to a height of 6 feet and over. One of the most refined, and beautiful pink dahlias to date.

Tubers \$2.50

SUPREME GLORY (Almy)—This is a decorative seedling of Elite Glory, a beautiful golden yellow with reverse of all petals heavily flushed with the red of its parent, with face of some petals slightly tinted with the same, particularly in the early blooms, making a flower of rare beauty. The petals are very long and the center is absolutely full, always. One of the most prolific big dahlias we know. We have picked five flowers, each 10 inches or over, from a single plant in one day and there were seven more blooms partly opened or showing color. The stems which are cane-stiff, will average three feet in length. It requires no disbudding as the crown bud is so much larger than the two side buds that they do not bother at all. The stems are leafless for 18 to 20 inches and very few joints. Its prolificacy of bloom is due to the great number of flower stalks thrown up, which start from the lower joints and grow far above the bush. It is a fine keeper. The flowers, which are deep as well as large in diameter, have been grown to 11½ inches with no feeding. The plant is practically immune to insect pests, even the borers seldom attacking its hard and woody stem.

Tubers \$7.50

THE WORLD (Dahliadel 90) 168, g e, Bloom 9x4½, Bush 5 ft.—This wonderful new dahlia was selected at the A. D. S. Show in New York, by Mr. J. D. Sullivan, of the New York World. The coloring is an unusually rich, deep, rosy magenta overlaid garnet with silver shadings on edges of petals. A rich and beautiful combination of colors. Perfect, full centers. Stems are strong and erect. Foliage leathery and repellent to insect injury. This greatly admired dahlia is sure to please you. Stock of tubers limited.

Tubers \$5.00

THE SPIRIT OF ST. LOUIS Dec. (Carver)—In this we have a dahlia every one has been waiting for. Something entirely different in color. It might be described best as nearest to a pleasing true American Beauty Rose color. Will not fade or burn in the sun. It was the sensational seedling at the Boston Show where it attracted much attention and received much favorable comment. Winning the Achievement Medal awarded by the Garden Home Builder for the best undisseminated decorative seedling. A superb flower of wonderful beauty. A very free bloomer. We have cut six 10-inch flowers at one time from a single plant. The flower has great depth, and is carried on a good stem. **Tubers \$5.00**

TREASURE ISLAND (Dahliadel 88) 169, c g e, Bloom 9x4½, Bush 6 ft.—One of the brightest autumn-shade dahlias we have seen. Color, bright apricot with gold, and rose suffusion and shadings. Bush growth is strong, branches readily from the ground, giving 5-foot stems. Flowers are held erect with full centers throughout the season. A dahlia that will score high both early and late in the season. Stock tubers limited. **Tubers \$4.00**

WALDHEIM SUNSHINE, Dec. (Peacock)—One of the outstanding new dahlias this year. Color is a true deep yellow, with darker reflex. There is a rich golden suffusion around the beautiful high center. The form is good, with long, wavy, twisted and whirled petals, which relieve the immense size from stiffness. A free bloomer with fine strong stems. **Tubers \$5.00**

WATCHUNG SUNRISE, Dec. (Smith)—An unusual dahlia in color and form. Color is a golden amber with reverse of petals showing rose-pink. Each petal has a narrow clear margin of rose-pink. The flower is large and deep having thick petals curving almost to the stem. **Tubers \$3.00**

WESTERN GIANT (Decorative)—This is the largest Dahlia we have ever grown. We had 12-inch blooms without disbudding and grown on very ordinary soil, without forcing. Will be a prize winner in the bloom sweepstake class. The stems are long, strong, and hold the big bloom up to look you in the face. Plants are medium height. Color is a very bright orange with tints of gold, reverse of petals are salmon rose. A very wonderful Dahlia. Stock limited. **Plants \$5.00**

WHITE EMPRESS, Dec. (Jost)—This new white dahlia was a sensational exhibit at the American Dahlia Society Show at Madison Square Garden, New York, winning the Darnell Cup for the best keeping dahlia in the show. It is a pure white decorative of good fair size and fine stems. The plant is a very rugged grower, a free bloomer and with its fine keeping qualities will rank as the best white decorative yet introduced. **Tubers \$3.00**

YANKEE KING (Wood's)—It is hard to accurately describe the coloring of this dahlia. It is a bloom of deep autumn tints with some rose on the reverse of the petals, or, as one admirer described it, intense flame with rose reverse. The blooms are very large and held erect on a tall vigorous bush by extra long fine stems. Yankee King was one of the eleven varieties that scored at Storrs. This was also one of the outstanding dahlias in our garden this past season. **Tubers \$2.00**

YELLOW BEAUTY, Dec. (Wood)—Pure Empire yellow in color. Splendid habit and style of growth. A seedling of Jersey's Beauty and possessing all the good points of its parent. This is one of the best new cut flower varieties that has been offered in years.
Tubers \$7.50

YELLOW PRINCESS—A sensation wherever shown, without a doubt the largest and best yellow decorative dahlia. Flowers from 10 to 12 inches on stiff stems. Won the American Dahlia Society Gold Medal Ribbon, 1927, for the best undisseminated decorative seedling that had been certificated at Storrs trial gardens; first prize for largest bloom in show at Providence, R. I., 1927; American Dahlia Society Certificate of Merit, 1926; mentioned in the Garden & Home Builder Dahlia "Roll of Honor", 1927. The dahlia everyone has been waiting for.
Tubers \$3.00

DECORATIVE DAHLIAS

The following are selected as being some of the best of the popular varieties.

Our large stocks of these enable us to offer all at popular prices.

Varieties marked thus (*) are most suitable for cutting.

- *Avalon—F. Pure canary yellow.
- *Amun Ra—F. Copper and orange.
- Black Beauty—I.F. Dark velvety maroon.
- *Couronne—I.F. Bright salmon pink.
- *Dakota—F. Coral red with coppery suffusion.....\$...75
- Dr. Tevis—I. F. Old rose suffused with gold.
- *Eldorado—F. Golden yellow.
- *Eleanor Vanderveer—F. Satiny rose pink.
- Eliza Clark Bull—F. A very large white.
- *El Toredor—F. A glowing crimson on good stem.
- *F. T. D.—F. A rich tyrian rose color.
- *Florence Finger—F. A wonderful orchid.
- *Jersey's Beacon—A Chinese scarlet..... .75
- *Jersey's Beauty—F. A real rose pink..... .75
- Jersey's Jewel—F. A monstrous mallow pink.
- Judge Marean—F. Salmon pink, orange and gold.
- *J. M. Goodrich—F. Pink, shaded to orange in center.
- *Lilian Baldwin—F. A bright distinct watermelon pink.
- *Kitty Dunlop—F. Rose p.nk. Good stems.
- *Margaret Masson—F. A beautiful silvery rose pink.
- Mordella—F. A bright apricot buff color.
- Monmouth Jewel—F. Lemon chrome shading to orange.
- *Mr. Dix—F. Bright orange on long stem.
- *Mrs. I. DeVer Warner—F. A deep mauve pink..... .75
- *Oyster Bay Beauty—F. A very large maroon flower.
- *Pax—F. Champagne, with rose suffusion.
- *Patrick O'Mara—F. Orange and bronze..... .50
- Paul Michael—F. Bright orange shading to gold.
- *Paul Revere—F. Rich bright velvety red.
- *Pride of Stratford—F. Copper, reflex dark coral red.
- Raven—I.F. Very dark, almost black.
- *Robert Scott—F. Bright apricot yellow, suffused rose.
- *Robert Treat—F. American Beauty rose color.

- ***Rose Fallon**—F. Dark orange tinted amber and salmon.
 - ***Ros Nell**—F. Clear bright rose.
 - ***Roman Eagle**—F. Roman gold.
 - ***Sanhicans King**—F. Bright tawny gold, shading to bronze.
 - ***Salback's White**—F. Pure white.
 - Susan G. Trevis**—F. A mulberry shade.
 - ***Sylvia Dickey**—F. Silver pink.
 - The Giantess**—F. Buff suffused old rose.
 - ***Tommy Atkins**—F. Flaming scarlet.
 - The Emperor**—F. An enormous purple maroon.
 - ***Trentonian**—F. A perfect flower in brown tones.
 - Wizard of Oz**—F. A very large amber pink.
 - World's Best White**—F. One of the best whites.
- Tubers of any of the above except where noted.
- | | | | |
|-----------|---------------|----------|----------------|
| Each..... | \$1.00 | Doz..... | \$10.00 |
|-----------|---------------|----------|----------------|

The following list contains many of the newer varieties which we offer at reduced prices.

- Altesse**—I.F. Bright buttercup yellow.
 - Barbara Redfern**—I.F. Old rose and gold.
 - Calvin Coolidge Jr.**—F. Bright rose-pink edged gold.
 - Champagne**—F. Shades of copper and chamois.
 - Jersey's Matchless**—I.F. A beautiful golden yellow.
 - Marie Dostal**—F. A shade lighter than Champagne.
 - Marie**—F. Deeper and brighter than Jersey's Beauty.
 - Marmion**—I.F. Yellow with bronze suffusion.
 - Mrs. Francis Hadden**—Yellow, free flowering.
 - Natures Jewel**—F. A charming baby pink.
 - Sagamore Beauty**—F. A Jersey's Beauty with violet center.
 - Sanhicans Nymph**—F. Creamy yellow.
 - Spottswood Beauty**—F. Chatney pink edged orange.
 - Virginia Irwin**—I.F. Bright tangerine, shading apricot in center.
- Large flower.
- | | |
|---------------------------------|--------------------|
| Tubers of any of the above..... | Each \$2.00 |
|---------------------------------|--------------------|

NEW POMPON DAHLIAS

Introductions from Bolsa Dahlia Gardens

- BOSSY**—Very pretty lavender with a darker tone in the center, prolific bloomer and very long stems..... **1.25**
- BRIGHT EYE**—Delicate rose pink deepening towards center, very dainty color and a good bloomer..... **1.25**
- DOLORES**—A rare color in a pompon, deep pink of one tone. Very striking..... **1.50**
- HAAKE'S GLOW**—Yellow base, heavily tipped old rose. An uncommon combination. Very prolific bloomer..... **1.50**
- MICKY**—An odd pompon in the straw color, daintily tipped lavender. Quite different, but pretty..... **1.50**
- MYIA**—Deep canary base, heavily tipped raspberry red. Both colors quite distinct. Very attractive..... **1.50**
- PILXY**—This pompon won first prize at the 1929 Dahlia Show. It is a very small deep yellow, heavily tipped Indian red..... **1.50**
- SALLY**—Small shell-like petals of cream delicately flushed pink..... **1.25**
- SUNSET GOLD**—A small perfect pompon of the shades of the new color capucine-canary yellow, very heavily suffused orange. Exceedingly pretty..... **1.50**

TAKA'S PURPLE —Bright carmine, an excellent flower with long stems.....	1.25
THE FLAPPER —Decided novelty—a bicolor—crimson maroon and cream pink, each flower is different.....	1.25

RED SHADES

The following Pompons are listed according to color:

BANTAM —Brownish red, small, perfect form and very long stems	\$0.75
BILLEE —Dark crimson, rich color.....	.75
DARKEST OF ALL —Maroon, almost black.....	.50
GERTRUDE —Crimson red.....	.75
JOHNNY PEPPIN (new) —Small dark crimson, splendid formation	1.50
LITTLE BEESWING —Golden yellow heavily tipped red, small50
LITTLE MARY —Deep red, almost black, small perfect form75
MARGY (new) —Flaming red, long stems.....	.50
MARIETTA —Rosy crimson, small.....	.35
PHYLLIS —Yellow, heavily shaded red.....	.35
TOM THUMB —Garnet, smallest in cultivation.....	.50
PATSY (New) —Golden bronze, tipped cherry.....	.75

LAVENDER AND PURPLE SHADES

GIRLIE —Pure lilac, good bloomer.....	.50
DEE DEE —Pale lilac, very small.....	.50
HELEN ANITA —Small lavender, white center, very attractive, long stems.....	.75
KATHLEEN —American beauty color.....	.75
LEDA BEELER —Deep lilac, small.....	.50
LIBBIE ROHR (New) —Cerise purple; long stems.....	1.50
MARY MUNNS (new) —Fuchsia with dark orchid sheen, long stems	1.00
MARY —Pale mauve, deeper in center.....	.75
REGULUS —Cerise purple50
ROSEA —Bluish lilac, small.....	.50
SUZANNE (new) —Lavender pointed petals; good stems.....	1.50

YELLOW AND ORANGE SHADES

AIMEE —Wee bronze.....	.50
AMBER QUEEN —Amber and gold shadings.....	.35
ANNA KRISTINA (new) —Golden yellow, shading deeper at center; very pretty.....	1.00
ATOM —Orange, very small, good bloomer.....	.50
DANDY —Light orange.....	.50
DONALD GORDON —Orange red50
DOUGLAS TUCKER —Golden yellow, crimson center.....	.50
EDITH —Yellow, heavily tipped brownish red.....	1.00
FASHION —Bright orange (large flower).....	.35
GOLDIE —Pure gold50
KIM —Orange50
LITTLE DAVID —Deep burnt orange, perfect form, abundant bloomer50
LOLITA —Yellow brown center.....	.35
MICKEY (1930) —Straw color daintily tipped lavender.....	1.50
MIKE —Burnt orange, shading lighter at outside petals; very dainty75
MRS. J. J. KYNN —Very small orange.....	.50

MYRA (1930) —Deep canary base, heavily tipped raspberry red. Both colors very distinct.....	1.50
NANKY POO (New) —Golden yellow, brownish center.....	1.50
PEGGY ANN (New) —Yellow, edged and shaded brownish red, prolific bloomer.....	1.50
PIXY (1930) —Small deep yellow, heavily tipped Indian red.....	1.50
SAMMY —Old gold50
SUNSET GOLD (1930) —Small perfect pompon. Canary yellow, heavily suffused orange.....	1.50
TOM —Bright yellow, tipped sunset red.....	.50
YELLOW GEM —Pure yellow, excellent flower.....	.50

PINK, OLD ROSE AND SALMON SHADES

ANNA VON SCHWERIN —Beautiful shell pink blending to a white center; very dainty.....	.75
BEBE —Pink and mauve, white ground, very pretty, good stems75
CANDY KID —Coral pink, shading to lavender.....	.35
CO. LA MAY (New) —Salmon pink, shading to light primrose yellow with rose eye.....	1.50
DAISY —Salmon rose35
DOLORES (1930) —Very pretty pink, one tone.....	1.50
CANYMEDE —Pinkish fawn.....	.35
GLOW —Old rose, excellent flower.....	.50
HAAKE'S GLOW (1930) —Yellow base heavily tipped old rose	1.50
HARRY SNOOK —Rose pink, white center.....	.35
HAZEL DELL (New) —Clear pink with cerise edge. Not small but an excellent cut flower.....	1.00
LASSIE —Yellow, old rose shadings.....	.35
LEOLA —Soft pink, lovely color.....	.75
LILIAS —Pinkish mauve, prolific bloomer.....	.50
LITTLE JEWEL —A miniature or pompom decorative peach blossom pink.....	.75
LLOYD HICKMAN —Old rose.....	.50
NELLIE FRASER —Light ground, edged rose pink.....	.35
ROSA WILMOUTH —Rose pink.....	.35
TY TEE (New) —Rose blending to creamy peach.....	1.00

WHITE

EDGAR (New) —Deep cream almost lemon in color, good stems50
JOE FETTE —Pure white.....	.50

ROSETTE DAHLIAS

Miniature Decorative Dahlias

Here we offer a distinctly different class of dahlias than those listed elsewhere. They have aptly been called the "vest pocket" editions of the huge flowering decorative type. Compact and sturdy in habit, they are perfect gems for cutting and no collection of dahlias can be considered complete without a quota of these charming miniatures.

	Each
Carine —A bright orange on long stems.....	\$1.00
Charlotte —Bright fawn, on long stems.....	1.00
Clown —Dark maroon evenly striped white.....	1.00

Cupedo —Lilac rose with long stems; choice.....	1.00
Electron —Bright russet.....	1.00
Garden Love —Brilliant carmine pink; superb.....	1.00
Glow —Brilliant orange-scarlet; extra fine.....	1.00
Irene —Exquisite old rose; flowers average about 2½ inches in diameter50
Little Jewel —The outstanding gem of this section. Pastel pink shade; perfect form.....	.75
Our Annie —Pleasing shrimp pink, shaded with amber.....	.75
Peach —A delightful soft pink, shaded with lemon at base....	1.00
Pink Pear —Similar to Little Jewel but a deeper color.....	.50
Pride —Light orange extra fine for cutting.....	1.00
Rainbow —Old rose with a rusty red base.....	1.00
Red Sea —A bright red on a good stem.....	1.00
Rhoda —A little gem of glowing orange and rose pink, per- fect form	1.00
Tipsy —A pure brilliant, rich red on extra long stems.....	1.00
Wemco —Buff suffused pink, small flower on long stems.....	1.00
White Aster —Immaculate white. Very choice.....	1.00

ENGLISH CHARM DAHLIAS

Miniature Dahlias of Peony-flowered Type

The newest type from Europe. They form bushy plants, 2½ to 3½ feet in height and are literally covered with flowers all season. The medium sized, semi-double blooms are carried on rigid, wire-like stems well above the foliage, making ideal garden plants. As cut flowers they are superb, keeping fresh in water for many days.

Boutinier—Brilliant red.

Electron—Rich carmen red, shaded orange base.

Fedora—Cerise, salmon and gold

Judith—A very odd shade of rusty red

Marcella—A soft deep glowing rose, with golden base.

Nora Bell—Orange red, yellow base.

Tubers of any of the above 75c each.

ROOTED CUTTINGS

We do not supply nor do we recommend rooted cuttings. Last season we made several shipments of Rooted Cuttings and as an experiment we purchased some from other growers. With the exception of a few they did not give satisfaction to our customers, nor did we get satisfaction from those we bought.

It is our aim to reduce our variety list as much as possible so that we can concentrate our attention to improving the kinds really needed. We will be glad to recommend varieties for your purpose. Just write us.

All Dahlias sent out are selected tubers or plants, from strong field-grown clumps, sure to grow, bloom and please.

The day is past when mediocre stock can be foisted on an unsuspecting public. There are too many growers trying to deliver the best they can.

Proper fertilizers when correctly applied reduce the number of culls and bring earlier maturity. Let us assist you with fertilizer problems.

DAHLIA CULTURE

DAHLIAS are of such easy culture and so exquisitely beautiful that everyone should grow them, and they are rapidly becoming one of our most popular flowers.

There is no flowering plant which at so little cost will produce such abundance of large and beautiful flowers as the Dahlia, and in the different varieties you will find almost every shade, tint and color imaginable.

PLANTING—Dahlias may be planted any time after danger of frost is over, but for the best results plant from May 1st to June 15th. Late plantings always produce the finest flowers.

SOIL PREPARATION—Prepare the soil in the spring by spading 8 to 12 inches deep. Heavy soil requires less fertilizer than a light soil. In clay soil, sifted coal ashes spread over the ground and well spaded in will loosen the soil.

Dig holes three to four feet apart (for all except the Pom Poms, two feet apart is enough for them). Holes should be six inches deep for both tubers and plants; drive a stout stake in each hole, now lay the tuber flat with the eye or sprout pointing up and toward the stake, and cover the tuber or plant with three inches of soil leaving the balance of the hole to be filled up later as the plants grow.

GREEN PLANTS—We have been very successful in shipping green plants long distances—shipping to California and distant points in Canada where they arrived in perfect condition. This is due to our specially constructed boxes made to allow a free circulation of air through the plants. Perhaps one reason why some of the amateur dahlia growers do not always succeed with green plants is due to the fact that they do not plant them deep enough. They should be planted fully twice as deep as they were in the pots, or from five to six inches deep. If in Fertext pots plant pot with the plant. Cover the plant about 3 inches deep filling the balance of the hole up gradually with soil as the plant grows. Water well after planting and if the weather is hot and sunny, shade for a few days

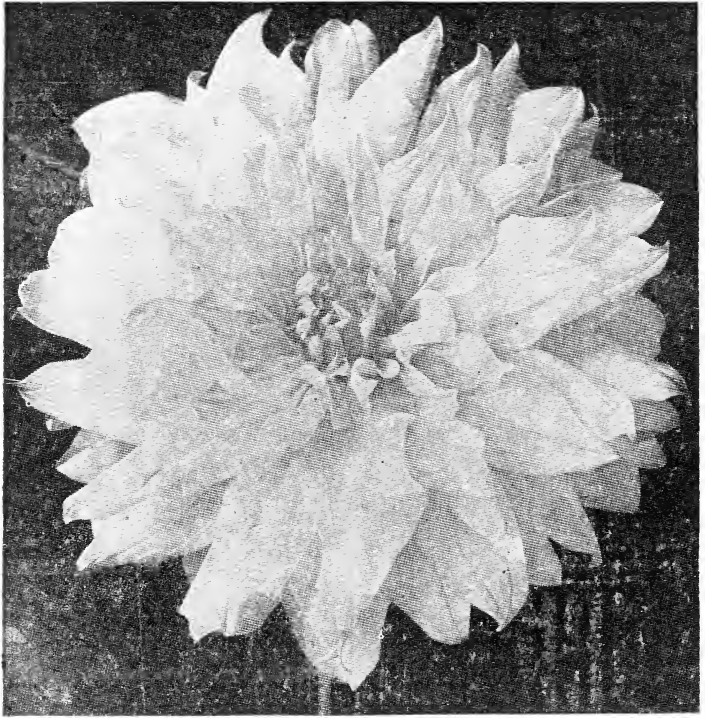
FERTILIZERS—To get extra good exhibition blooms, before planting time scatter over the ground a properly balanced fertilizer. Spade this in the ground well, and it will be ready to give the tubers or plants a good start, as it will supply food to the tiny roots no matter how far they may grow from the plants. Never let the tuber or plant come in direct contact with the fertilizer. When the plants are 15 inches high, a top dressing of fertilizer should be used. This should be well raked into the soil but kept away from the stems.

When the plants have made their third set of leaves, the top should be pinched out, to make them branch.

DISBUDDING the side buds, leaving only the terminal bud to develop, will bring larger blossoms.

After the plants have been blackened with the first frost they should be carefully dug, allowed to dry for a few hours, and stored in a dry cellar or basement and covered with dry sand or soil to keep them from shriveling.

Divide the tubers in the Spring, after the eyes show plainly, being careful that each tuber has a piece of the crown attached with an eye, cover them again and keep dry and cool until planted.



Chemar's Eureka

From The Florists Exchange:

Chemar's Eureka at the A. D. S. Show, "One of the best Dahlia novelties of 1929, introduced by Chemar Dahlia Gardens. It has perfectly formed flowers on splendid stems. It is almost a pure white and resembles its parent Jersey's Beauty."

Mr. Donald Marshall of W. E. Marshall & Co., states, "In all my travels last Fall, Eureka was the best Dahlia I saw growing in the hundreds of gardens I visited."

